

Best Management Practices (BMPs) for Maintaining Tallow Drums



DO lock the lid in place

What to Do:

DO place Tallow Drums:

- On flat, paved surface
- Away from storm drains
- In secondary containment which includes; trash enclosures with berm, drip pans with over head coverage or enclosed containment bins.

Each time, **DO**:

- Secure and lock lids
- Clean up any spills immediately

Contacts:

For spills greater than 1 quart report to EH&S: (650) 725-9999

For releases to storm drains, have the building manager contact the Stanford Water Department:

(650) 723-2281 or

(650) 723-1300

Help with BMPs/Training call:

Water Planning & Stewardship:

Erica Kudyba: (650) 736-1946

suwater.stanford.edu/wps

SeQuential Main Office:

(800) 447-3794



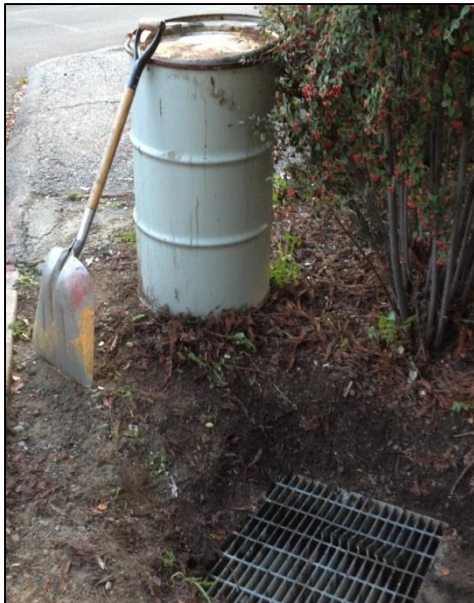
DO make sure secondary containment is clean, and closed properly

Best Management Practices (BMPs) for Maintaining Tallow Drums



What **NOT** to Do:

- Do not place Tallow Drums next to storm drains
- Do not place items on top of or leaned against Tallow Drums
- Do not leave Tallow Drum lids open or unlocked
- Do not allow secondary containment to become soiled



Do **NOT** place Tallow Drums **next to Storm Drains**



Do **NOT** place items **on top of or leaning against** Tallow Drums



Do **NOT** allow secondary containment **to become soiled**



Do **NOT** leave Tallow Drum **lids open or unlocked**