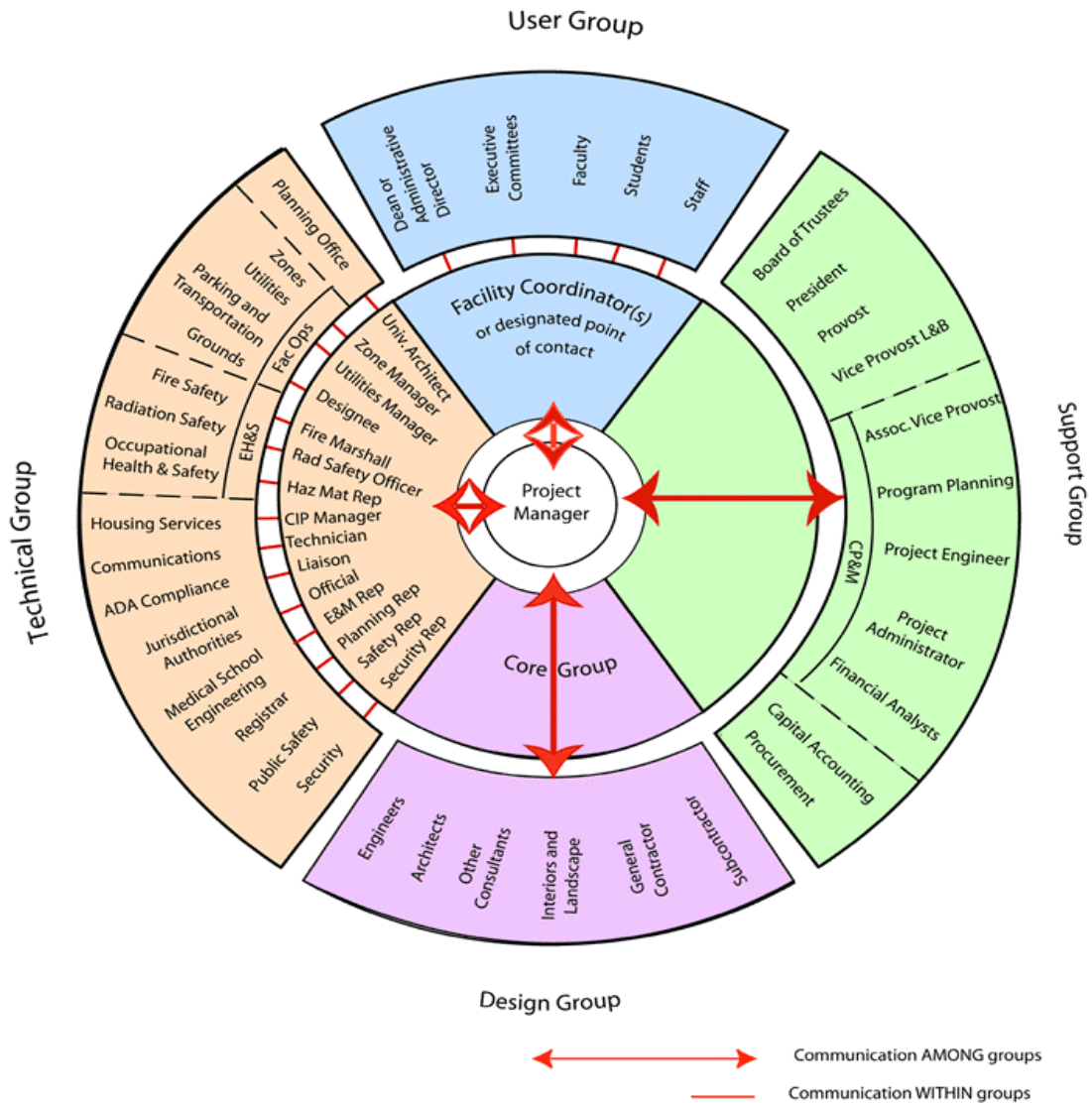




## PROJECT TEAM: PRIMARY COMMUNICATIONS DIAGRAM

This diagram is intended as a guideline for primary communication responsibilities and is not an organizational chart. The diagram identifies the entire **Project Team**, which is led by the Capital Planning & Management Project Manager and comprises four distinct groups formed according to function and expertise: the **User Group**, **Design Group**, **Technical Group** and **Support Group**. Each Group provides input, guidance and professional expertise throughout the design, construction and closeout phases of a project. The inner ring of the diagram represents the **Core Group**, which includes only Stanford personnel and is responsible for communicating relevant issues about scope, budget and schedule to their group's participants and to the other Core Group members.



**Note:** The role of the Project Manager in the center is filled by CP&M's Capital Planner during the Scoping Phase of the process